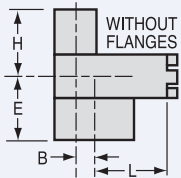
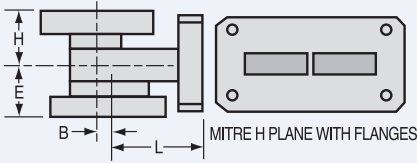


Mitre H Plane Tees

MAGIC TEES



W/G Size	Electrical Data							Mechanical Data						
	Frequency GHz	Model Number	*VSWR Maximum		Isolation DB Min Between		Unbalance DB	Dimensions (inches)				Common Wall Thickness (inches)	Dual Output Terminal	Recommended Dual Flange ¹²
			H Arm	E Arm	E & H Arms	Parallel Arms		L	E	H	B			

Mitre H Plane with Flanges

WR28	33.5-36.0	28TC16	1.25	1.25	40	20	±10	.665	.310	.310	.070	.040	FLANGE	28FS12
	30.0-38.5	28TC26	1.50	1.50	40	10	±10	.665	.310	.310	.070	.040	FLANGE	28FS12
WR42	18.0-26.0	42CT16	1.70	1.50	40	10	±10	.610	.320	.320	.040	.040	FLANGE	42FS12
	16.0-17.0	51TC16	1.10	1.15	40	25	±10	.831	.388	.388	.128	.040	FLANGE	51FS12
WR51	15.5-18.0	51TC26	1.15	1.20	40	22	±10	.831	.388	.388	.128	.040	FLANGE	51FS12
	15.5-17.2	62TC16	1.15	1.15	40	23	±10	.835	.480	.361	.156	.040	FLANGE	62FS52
	15.0-17.5	62TC26	1.20	1.30	40	19	±10	.835	.840	.361	.156	.040	FLANGE	62FS52
	13.0-13.5	62TC36	1.20	1.20	40	23	±10	.835	.516	.516	.156	.040	FLANGE	62FS52
WR62	12.5-14.0	62TC46	1.35	1.18	40	19	±10	.835	.516	.516	.156	.040	FLANGE	62FS52
	8.5-9.6	90TC16	1.30	1.20	40	21	±10	.983	.410	.680	.250	.050	FLANGE	90FS72
	8.2-10.4	90TC26	1.45	1.40	40	15	±10	.983	.410	.680	.250	.050	FLANGE	90FS72
WR112	6.8-8.2	112TC16	1.30	1.30	40	17	±10	1.216	.620	1.041	.312	.064	FLANGE	112FS62
	6.5-8.5	112TC26	1.60	1.50	40	14	±10	1.216	.620	1.041	.312	.064	FLANGE	112FS62

Mitre H Plane Without Flanges

	Frequency GHz	Model Number	*VSWR Maximum	Isolation DB Min	Between	Unbalance DB	L		E		H		C/W	OUT TERM	B	
							STD.	MIN.	STD.	MIN.	STD.	MIN.				
WR28	33.5-36.0	28TC12	1.25	1.25	40	20	±10	.665	.213	.310	.236	.310	.150	.040	WG	.070
	30.0-38.5	28TC22	1.50	1.50	40	15	±10	.655	.213	.310	.236	.310	.150	.040	WG	.070
WR42	18.0-26.0	42TC12	1.70	1.50	40	10	±10	.610	.387	.320	.165	.320	.254	.040	WG	.125
	16.0-17.0	51TC12	1.10	1.15	40	25	±10	.335	.315	.388	.388	.388	.388	.040	CORRAL	.128
WR51	15.5-18.0	51TC22	1.15	1.20	40	23	±10	.335	.315	.388	.388	.388	.388	.040	CORRAL	.128
	15.5-17.2	62TC12	1.15	1.15	40	23	±10	.511	.427	.480	.480	.288	.361	.040	CORRAL	.156
WR62	15.0-17.5	62TC22	1.20	1.30	40	19	±10	.511	.427	.480	.480	.361	.288	.040	CORRAL	.156
	13.0-13.5	62TC32	1.20	1.20	40	23	±10	.361	.321	.361	.246	.361	.246	.040	CORRAL	.156
	12.5-14.0	62TC42	1.35	1.18	40	19	±10	.321	.361	.361	.246	.361	.246	.040	CORRAL	.156
	8.5-9.6	90TC12	1.30	1.20	40	21	±10	.983	.500	.410	.300	.680	.680	.050	CORRAL	.250
WR90	8.2-10.4	90TC22	1.45	1.40	40	15	±10	.983	.500	.410	.300	.680	.680	.050	CORRAL	.250
	6.8-8.2	112TC12	1.30	1.30	40	17	±10	1.070	.690	.450	.380	.950	.850	.064	WG	.312
WR112	6.5-8.5	112TC22	1.60	1.50	40	13	±10	1.070	.690	.450	.380	.950	.850	.064	WG	.312