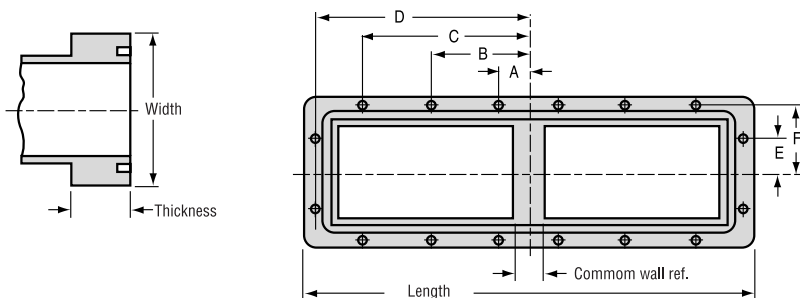


Dual Sidewall Flanges

MDL sidewall flanges are available in a wide variety of waveguide sizes, in aluminum and copper alloys. The dual sidewall flat flanges employ a sleeve type mounting in which the waveguide feeds through the flange completely. The common wall is formed by the component to which the flange is brazed. The choke type flange uses butt type mounting. In addition to the flange models listed, MDL can supply many other hole sizes and drill patterns to meet specific customer's requirements.

W/G Size	Common Wall Thickness (inches)	Mounting	Holes Type	Holes Number	Holes Size	MDL Model No.*	Outside Dimensions			Hole Location Dimensions*						New Gasket No.		
							Length	Width	Thickness	A	B	C	D	E	F			
WR62 .622-.311	.040	Sleeve	Clear	4	.144 Dia.	62FS132	1.765	1.327	.124				.753			.481	62GA 16	
			Tap	4	6-32 Thr'd	62FS142	1.735	1.297	.094				.747			.475		
RG91/U			Clear	6	.144 Dia.	62FS152	1.765	1.327	.124	0.00			.753			.481	62GA 16	
RG107/U			Tap	6	6-32 Thr'd	62FS162	1.735	1.297	.094	0.00			.747			.475		
WR90 .900-.400	.050	Sleeve	Clear	4	.169 Dia.	90FS132	2.593	1.640	.186				1.088			.643	90GA 16	
			Tap	4	8-32 Thr'd	90FS142	2.593	1.610	.156				1.082			.637		
RG52/U			Clear	6	.169 Dia.	90FS152	2.593	1.640	.186	0.00			1.088			.643	90GA 16	
RG67/U			Tap	6	8-32 Thr'd	90FS162	2.563	1.610	.156	0.00			1.082			.637		
	.120	Sleeve	Clear	4	.169 Dia.	90FS332	2.593	1.640	.186				1.123			.643	90GA 46	
			Tap	4	8-32 Thr'd	90FS342	2.563	1.610	.156				1.117			.637		
			Clear	6	.169 Dia.	90FS352	2.593	1.640	.186	0.00				1.123			.643	90GA 46
			Tap	6	8-32 Thr'd	90FS362	2.563	1.610	.156	0.00				1.117			.637	
WR112 1.122-.497	.064	Sleeve	Clear	10	.169 Dia.	112FS102	3.233	1.390	.233	0.00	.727			1.449	.364	.543	112GA 16	
			Tap	10	8-32 Thr'd	112FS112	3.203	1.360	.203	0.00	.721			1.443	.358	.537		
RG51/U																		
RG68/U																		
WR137 1.372-.622	.074	Sleeve	Clear	10	.199 Dia.	137FS52	3.815	1.625	.237	0.00	.856			1.711	.312	.617	137GA 16	
			Tap	10	10-24 Thr'd	137FS62	3.785	1.595	.231	0.00	.852			1.707	.310	.615		
RG50/U																		
RG106/U																		
WR187 1.872-.872	.128	Sleeve	Clear	12	.196 Dia.	187FS52	5.046	2.046	.358	.502	1.502			3.331	.502	.831	187GA16	
			Tap	12	10-32 Thr'd	187FS62	5.016	2.016	.328	.498	1.498			3.327	.498	.827		
RG49/U																		
RG95/U																		
WR284 2.840-1.340	.160	Sleeve	Clear	12	.261 Dia.	284FS32	7.233	2.733	.358	.752	2.252			3.362	.851	1.112	284GA 16	
			Tap	12	1/4-20 Thr'd	284FS42	7.203	2.703	.328	.748	2.248			3.358	.847	8.27		
RG48/U																		
RG75/U																		

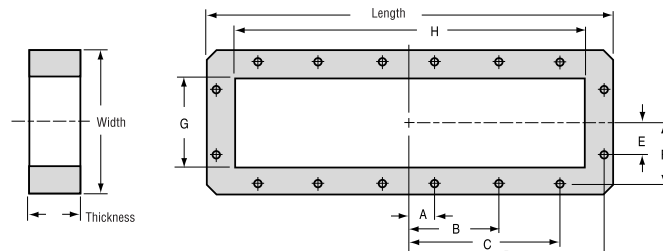
Notes: *These flange dimensions and models are for reference only.
Actual groove must be machines on flange face after assembly has been brazed.
Dimensions seperated by a dashed line are min./max.



Dual Sidewall Flanges

W/G Size	Common Wall Thickness (inches)	Mounting Type	Holes		MDL Model No.	Outside Dimensions				Hole Location Dimensions*															
			Type	Number		Size	Length	Width	Thickness	A	B	C	D	E	F	G	H								
WR28 .280-.140 RG96/U	.040	Sleeve	Clear	6	.116 Dia.	28FS12	1.22	.77	.17	0.00						.502						.272	.222	.683	
			Tap	6	4-40 Thr'd	28FS22	1.18	.73	.13	0.00							.498						.268	.225	.686
	.090	Sleeve	Clear	6	.116 Dia.	28FS42	1.22	.77	.17	0.00						.502						.272	.222	.733	
			Tap	6	4-40 Thr'd	28FS52	1.18	.73	.13	0.00						.498						.268	.225	.736	
				Clear	6	.089 Dia.	28FS62																		
WR42 .420-.170 RG53/U RG121/U RG66/U	.040	Sleeve	Clear	4	.116 Dia.	42FS12	1.358	.890	.140							.551						.336	.253	.963	
			Tap	4	4-40 Thr'd	42FS22	1.328	.860	.110							.549						.334	.256	.966	
	.090	Sleeve	Clear	4	.116 Dia.	42FS32	1.405	.890	.140							.576						.336	.253	1.013	
			Tap	4	4-40 Thr'd	42FS42	1.375	.860	.110						.574						.334	.256	1.016		
				Clear	4	.144 Dia.	62FS52	1.765	1.327	.140							.753						.481	.394	1.367
				Tap	4	6-32 Thr'd	62FS62	1.735	1.297	.110						.747						.475	.397	1.370	
			Clear	6	.144 Dia.	62FS72	1.765	1.327	.140	0.00						.753						.481	.394	1.367	
			Tap	6	6-32 Thr'd	62FS82	1.735	1.297	.110	0.00					.747						.475	.397	1.370		
	.090	Sleeve	Clear	4	.144 Dia.	62FS92	1.765	1.327	.140							.753						.481	.394	1.417	
			Tap	4	6-32 Thr'd	62FS102	1.735	1.297	.110						.747						.475	.397	1.420		
			Clear	6	.144 Dia.	62FS112	1.765	1.327	.140	0.00						.753						.481	.394	1.417	
			Tap	6	6-32 Thr'd	62FS122	1.735	1.297	.110	0.00					.747						.475	.397	1.420		
WR90 .900-.400 RG52/U RG67/U	.050	Sleeve	Clear	4	.169 Dia.	90FS52	2.593	1.640	.186							1.088						.643	.503	1.953	
			Tap	4	8-32 Thr'd	90FS62	2.563	1.610	.156						1.088						.637	.506	1.956		
				Clear	6	.169 Dia.	90FS72	2.593	1.640	.186	0.00					1.088						.643	.503	1.953	
				Tap	6	8-32 Thr'd	90FS82	2.563	1.610	.156	0.00					1.088					.637	.506	1.956		
		.120	Sleeve	Clear	4	.169 Dia.	90FS92	2.593	1.640	.186							1.123						.643	.503	2.023
				Tap	4	8-32 Thr'd	90FS102	2.563	1.610	.156						1.117					.637	.506	2.026		
			Clear	6	.169 Dia.	90FS112	2.593	1.640	.186	0.00						1.123						.643	.503	2.023	
			Tap	6	8-32 Thr'd	90FS122	2.563	1.610	.156	0.00					1.117					.637	.506	2.026			
WR112 1.122-.497 RG51/U RG68/U	.064	Sleeve	Clear	10	.169 Dia.	112FS62	3.233	1.390	.265	0.00	.727		1.449	.364	.543	.628	2.439								
			Tap	10	8-32 Thr'd	112FS72	3.203	1.360	.235	0.00	.721		1.443	.358	.537	.631	2.442								
	.150	Sleeve	Clear	10	.169 Dia.	112FS82	3.233	1.390	.265	0.00	.727		1.449	.364	.543	.628	2.525								
			Tap	10	8-32 Thr'd	112FS92	3.203	1.360	.235	0.00	.721		1.443	.358	.537	.631	2.528								
		.074	Sleeve	Clear	10	.199 Dia.	137FS12	3.815	1.625	.265	0.00	.856		1.711	.312	.617	.754	2.951							
				Tap	10	10-24 Thr'd	137FS22	3.785	1.595	.235	0.00	.852		1.707	.310	.615	.757	2.954							
	.150	Sleeve	Clear	10	.199 Dia.	137FS32	3.815	1.625	.265	0.00	.856		1.711	.312	.617	.754	3.028								
			Tap	10	10-24 Thr'd	137FS42	3.785	1.595	.235	0.00	.852		1.707	.310	.615	.757	3.031								
WR187 1.872-.872 RG49/U RG95/U	.128	Sleeve	Clear	12	.196 Dia.	187FS12	5.046	2.046	.390	.502	1.502		2.331	.502	.831	1.005	4.008								
			Tap	12	10-32 Thr'd	187FS22	5.016	2.016	.360	.498	1.498		2.327	.498	.827	1.008	4.011								
	.150	Sleeve	Clear	12	.196 Dia.	187FS32	5.046	2.046	.390	.502	1.502		2.331	.502	.831	1.005	4.029								
			Tap	12	10-32 Thr'd	187FS42	5.016	2.016	.360	.498	1.498		2.327	.498	.827	1.008	4.032								
		.160	Sleeve	Clear	12	.261 Dia.	284FS12	7.233	2.733	.390	.752	2.252		3.362	.851	1.112	1.505	6.010							
				Tap	12	1/4-20 Thr'd	284FS22	7.203	2.703	.360	.748	2.248		3.358	.847	1.108	1.510	6.015							

Notes: * These flange dimensions and models are for reference only.
Actual groove must be machined on flange face after assembly has been brazed.
Dimensions separated by a dashed line are min./max.



Dual Sidewall Flanges

W/G Size	Common Wall Thickness (inches)	Mounting	Type	Holes Number	Size	MDL Model No. *	Outside Dimensions			Hole Location Dimensions*			Gasket No.
							Length	Width	Thickness	A	B	C	

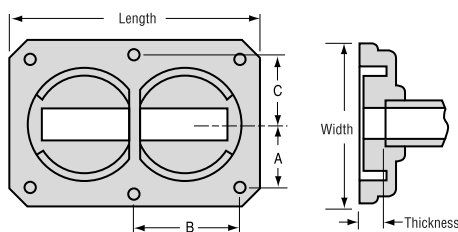
Dual Sidewall Choke Flanges

WR42 .420-.170 RG53/U RG121/U RG66/U	.040	Butt	Clear	4	.116 Dia.	42FS 70	1.390	1.015	.163	.392	.502	
			Tap	4	4-40 Thr'd	42FS 80	1.360	.985	.157	.388	.498	
WR62 .622-.311 RG91/U RG107/U	.040	Butt	Clear	6	.144 Dia.	62FS 32	1.765	1.327	.253	.480	.752	.480
			Tap	6	6-32 Thr'd	62FS 42	1.735	1.297	.247	.476	.748	.476
WR90 .900-.400 RG52/U RG67/U	.050	Butt	Clear	6	.169 Dia.	90FS 32	2.608	1.640	.315	.642	1.087	.642
			Tap	6	8-32 Thr'd	90FS 42	2.578	1.610	.309	.638	1.083	.638
WR112 1.122-.497 RG51/U RG68/U	.064	Butt	Clear	6	.169 Dia.	112FS 42	3.077	1.890	.440	.739	1.271	.807
			Tap	6	8-32 Thr'd	112FS 52	3.047	1.860	.434	.735	1.267	.803

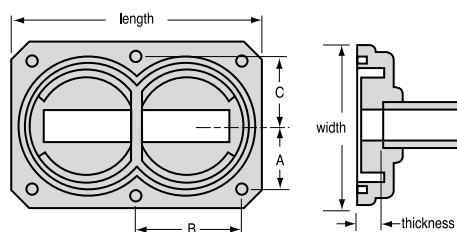
W/G Size	Common Wall Thickness (inches)	Mounting	Type	Holes Number	Size	MDL Model No. *	Outside Dimensions			Hole Location Dimensions*			Gasket No.
							Length	Width	Thickness	A	B	C	

Dual Sidewall Pressurized Choke Flanges

WR42 .420-.170 RG53/U RG121/U RG66/U	.040	Butt	Clear	4	.116 Dia.	42FS10	1.390	1.015	.163	.392	.502	42GA1T	
			Tap	4	4-40 Thr'd	42FS20	1.360	.985	.157	.388	.498		
			Clear	4	.116 Dia.	42FS30	1.358	.890	.163	.336	.551	42GA12	
			Tap	4	4-40 Thr'd	42FS40	1.328	.860	.157	.334	.549		
WR62 .622-.311 RG91/U RG107/U	.040	Butt	Clear	4	.144 Dia.	62FS12	1.765	1.327	.253	.480	.752	62GA12	
			Tap	4	6-32 Thr'd	62FS22	1.735	1.297	.247	.476	.748		
WR90 .900-.400 RG52/U RG67/U	.050	Butt	Clear	4	.169 Dia.	90FS12	2.608	1.640	.315	.642	1.087	90GA12	
			Tap	4	8-32 Thr'd	90FS22	2.578	1.610	.309	.638	1.083		
WR112 1.112-.497 RG51/U RG68/U	.064	Butt	Clear	6	.169 Dia.	112FS22	3.077	1.890	.440	.739	1.271	.807	112GA12
			Tap	6	8-32 Thr'd	112FS32	3.047	1.860	.434	.735	1.267	.803	
		.150	Butt	Tap	6	8-32 Thr'd	112FS12	3.218	1.890	.443	.739	1.314	.807
							3.188	1.860	.433	.735	1.310	.803	



SIDEWALL CHOKE FLANGE



SIDEWALL PRESSURIZED CHOKE FLANGE

Notes: *Dimensions separated by a dashed line are min./max.